



RESILIENT AND SUSTAINABLE CITY REGION FOOD SYSTEMS

Introduction to the FAO-RUAF CRFS assessment and planning process



Food and Agriculture
Organization of the
United Nations



LAURIER
Inspiring Lives!



RESEARCH
PROGRAM ON
Water, Land and
Ecosystems

LED BY
IWM
International Water
Management Institute



Federal Ministry
of Food
and Agriculture

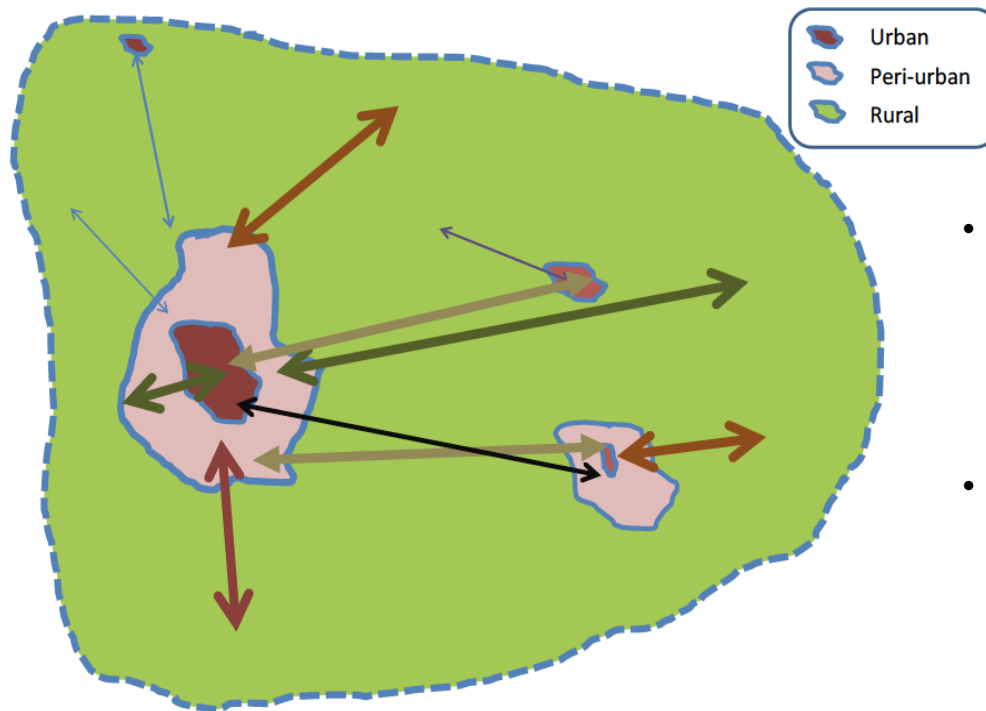
by decision of the
German Bundestag



-
- The image shows the front cover of a book titled "BUILDING SUSTAINABLE AND RESILIENT CITY REGION FOOD SYSTEMS". The title is written in large, bold, white capital letters on a dark blue background. Below the title, the subtitle "ASSESSMENT AND PLANNING HANDBOOK AND ONLINE TOOLKIT" is written in smaller, bold, black capital letters. The cover is decorated with a grid of 16 colorful illustrations depicting various food system activities, such as farming, food processing, distribution, and consumption. At the top left is the FAO logo, and at the top right is the RUAF logo. At the bottom, the logos of the authors, Laurier and IWM, are displayed.



WHAT IS A CITY REGION?

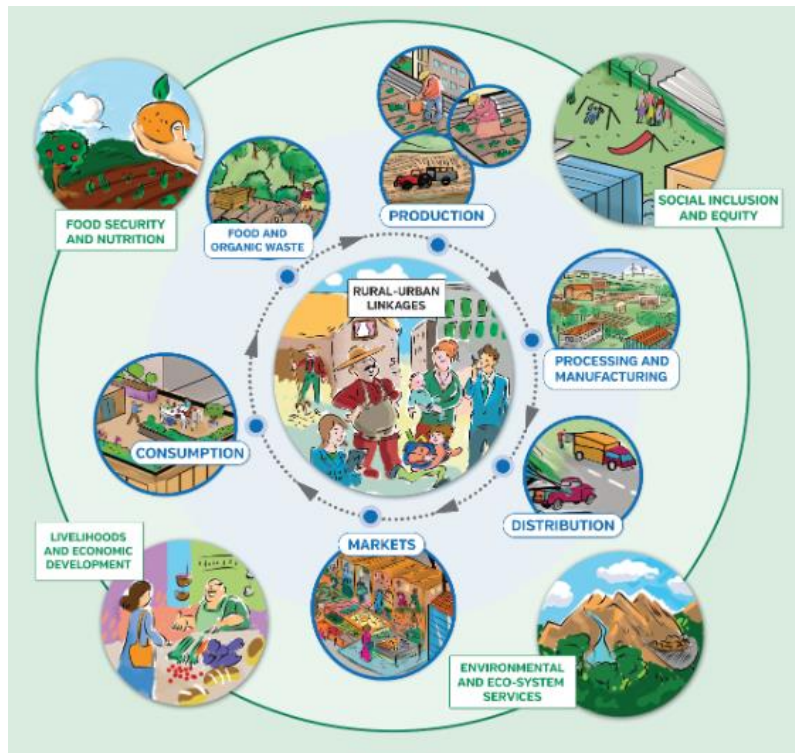


Different colors of arrows represent different functional relations between urban, peri-urban and rural; different weights of arrows point to different intensities of functional relations

- A larger urban centre – or conglomeration of smaller urban centres – and the surrounding and interspersed peri-urban and rural hinterland.
- An area in which flows of people, goods and ecosystem services operate across the rural-urban continuum



WHAT IS A CITY REGION FOOD SYSTEM?



- CRFS approach advocates strengthened connectivity between urban centres and surrounding areas
- Encompasses the complex network of actors, processes and relationships that are involved in food production, processing, marketing and consumption in a given city region.
- Includes the economic, societal, and environmental components that configure those actors, processes and relationships.



PHASE 1: 2015-2018

Sustainable and resilient city region food systems

Colombo (Sri Lanka)
Utrecht (The Netherlands)
Quito (Ecuador)
Kitwe (Zambia)
Lusaka (Zambia)
Medellin (Colombia)
Toronto (Canada)



Quito

2018: Signature of the Pacto Agroalimentario Quito

2020: Informed Covid-19 emergency food response

Lusaka

2020: Establishment of the Food Policy Council



PHASE 2: 2019-2023

Climate and pandemic resilient city region
food systems

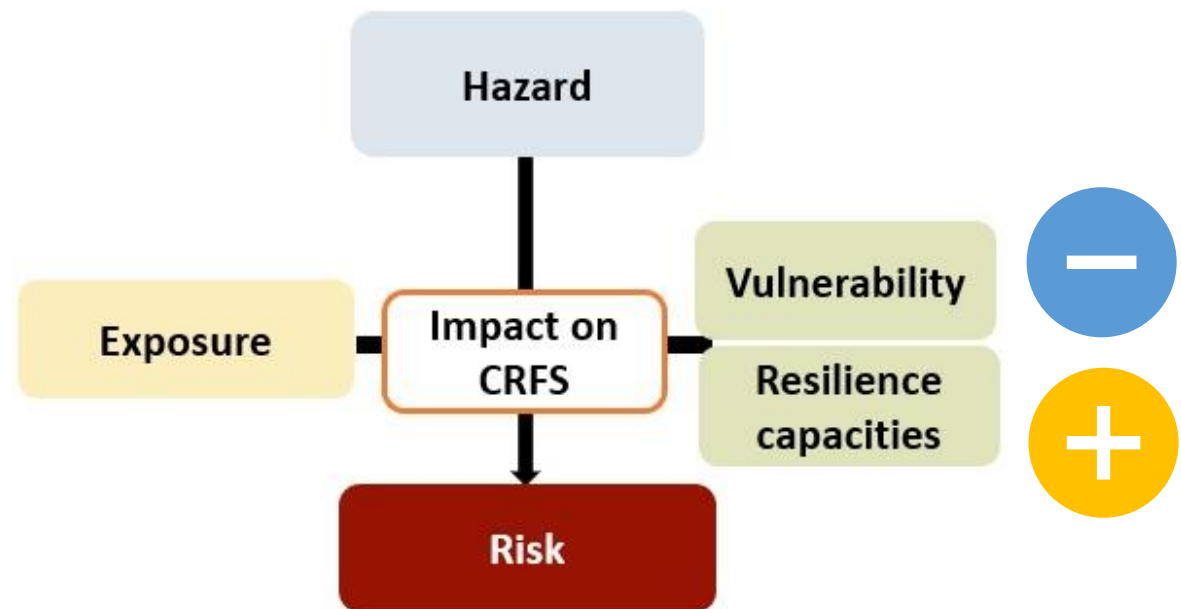
Antananarivo (Madagascar)

Colombo (Sri Lanka)

Kigali (Rwanda)

Melbourne (Australia)

Tamale (Ghana)



Risk is the likelihood of damage or negative impacts or consequences



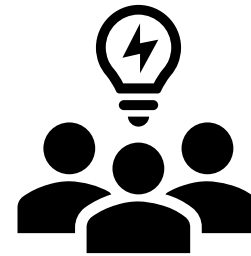
MODULES AND ACTIVITIES



MODULES AND ACTIVITIES

INCEPTION

- Determine entry points, secure political buy-in
- Set up project team (coordinator, institutional focal point, GIS expert, value chain expert...)
- Develop work plan
- Establish stakeholder advisory group
- Draw up initial vision



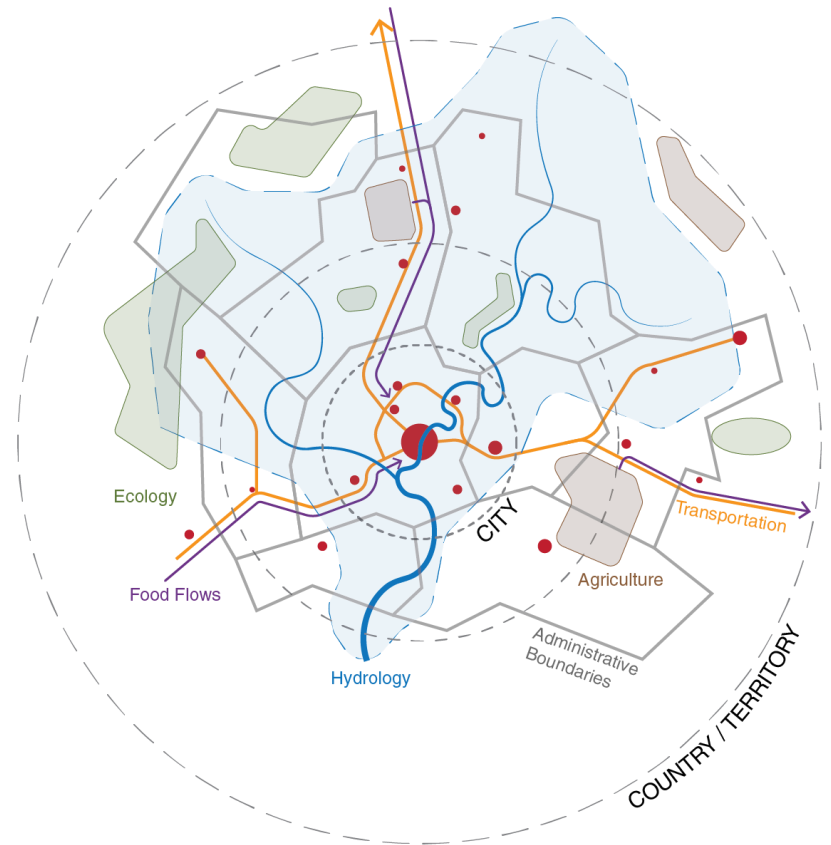
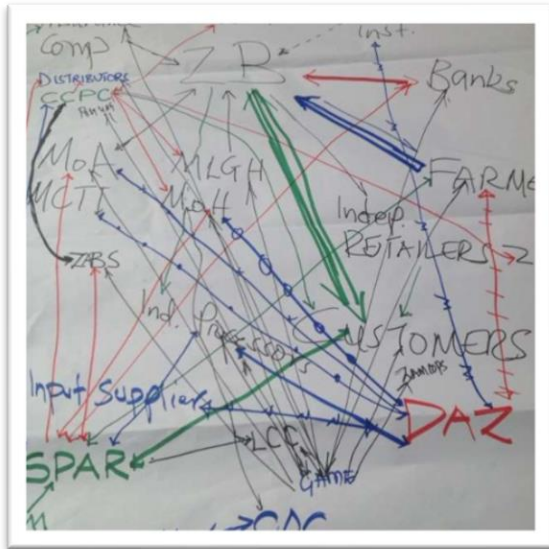
‘It is the year 2025/2030 and there has been a dramatic reduction in the vulnerability to climate shocks and stresses of the [name of place] city region food system. What do you see happening in 2025/2030? What is being achieved?’



MODULES AND ACTIVITIES

DEFINE THE CRFS

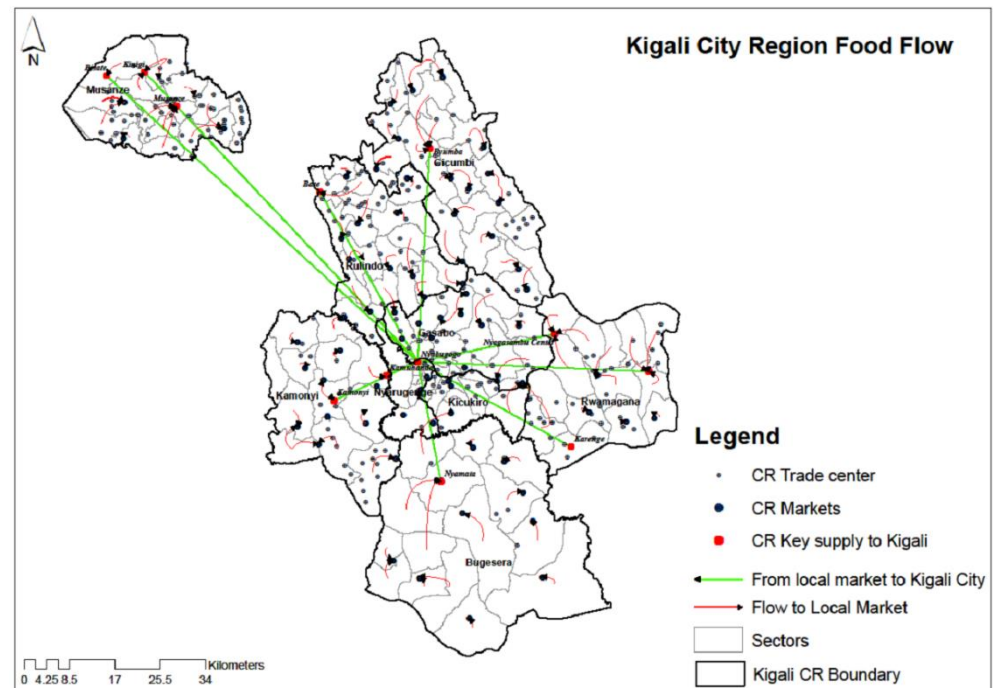
- Determine initial CRFS boundaries
- Stakeholder mapping analysis



MODULES AND ACTIVITIES

RAPID SCAN

- Establish local context
- Characterize the CRFS
- Scan climate and pandemic risks
- Participatory decision-making



MODULES AND ACTIVITIES

IN-DEPTH ASSESSMENT

- Drawing up indicators
- Developing the methodology
- Developing data collection instruments
- Analyzing findings
- Reporting



Photo: P. Amoah, Tamale

Indicator	Research questions	Data source	Data collection method
			



MODULES AND ACTIVITIES

ACTION PLANNING

- Multi-stakeholder workshop
- Working group meetings
- Outreach and engagement
- Final SAG meeting – action planning progress report, on-going governance and monitoring

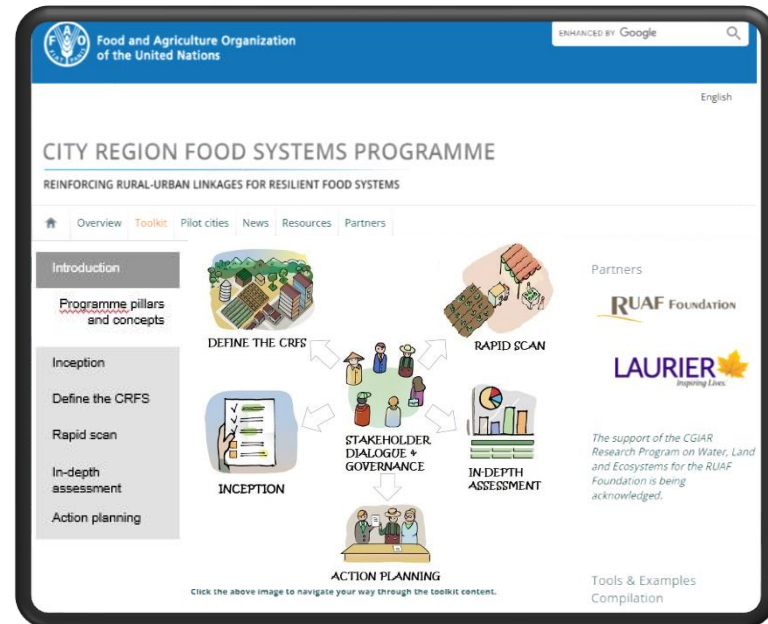
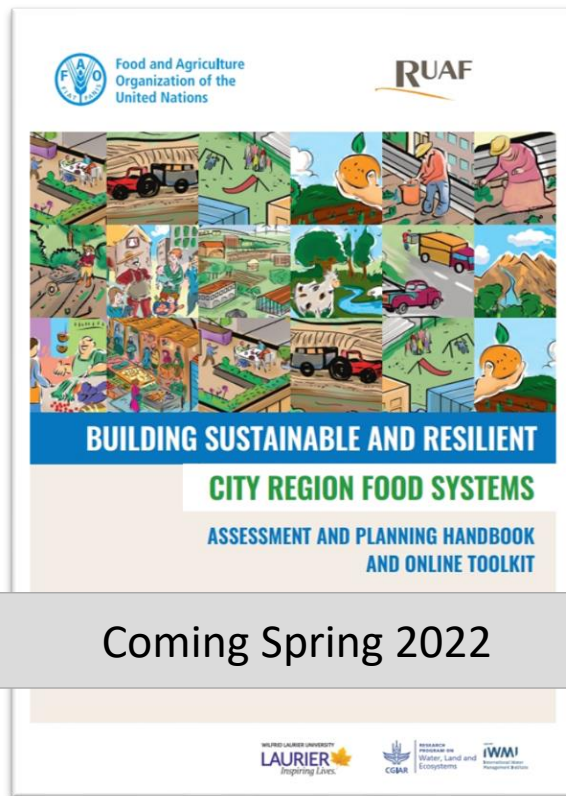


Photo: C. Mukantwali, Kigali

Policy		Practical intervention / programme	
Does a policy already exist in this area?		Does a practical intervention or programme already exist in this area?	
Yes	No	Yes	No
What needs to be changed or strengthened?	What needs to be included in a new policy?	What needs to be changed or strengthened?	What needs to be included in a new intervention?



CITY REGION FOOD SYSTEM PROGRAMME



<http://www.fao.org/in-action/food-for-cities-programme>

Jess Halliday, RUAF -- j.halliday@ruaf.org

